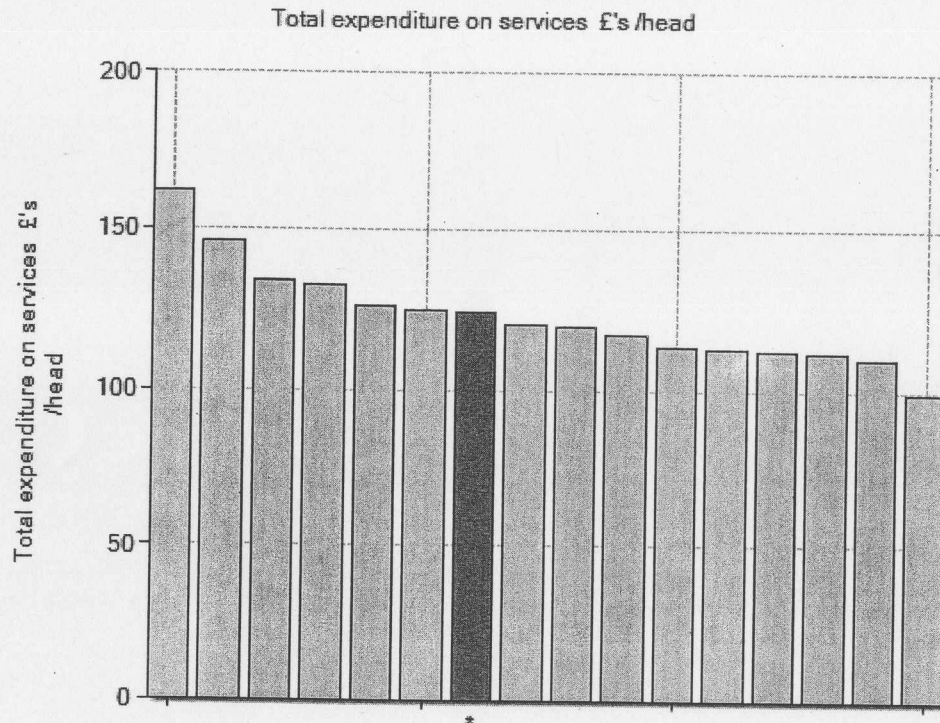


Total expenditure

Appendix 2



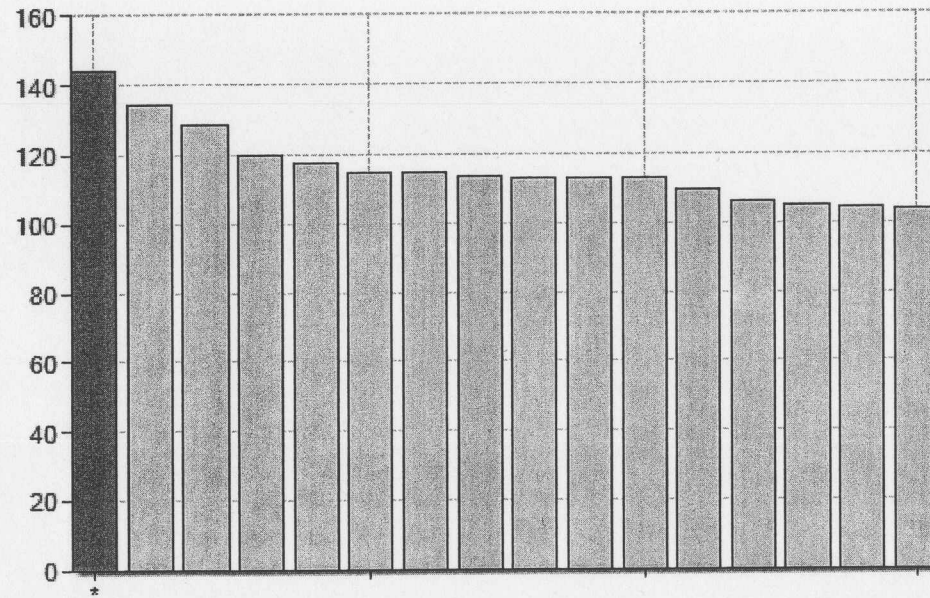
Authority name	2004 £/head
Chester City Council	162.02
Maidstone Borough Council	146.37
Shrewsbury and Atcham Borough Council	133.80
South Somerset District Council	132.85
Stratford on Avon District Council	126.23
Ashford Borough Council	125.37
Harrogate Borough Council	124.50 (Above av)
Wychavon District Council	120.42
Mendip District Council	120.24
Warwick District Council	117.60
Mid Sussex District Council	114.00
Borough of Macclesfield	113.10
Salisbury District Council	112.55
Stroud District Council	112.03
Taunton Deane Borough Council	110.15
West Wiltshire District Council	98.86

Group average = £123.14/head

Harrogate Borough Council overall
Customer satisfaction level = 58%
(ie above national average)

Net revenue expenditure

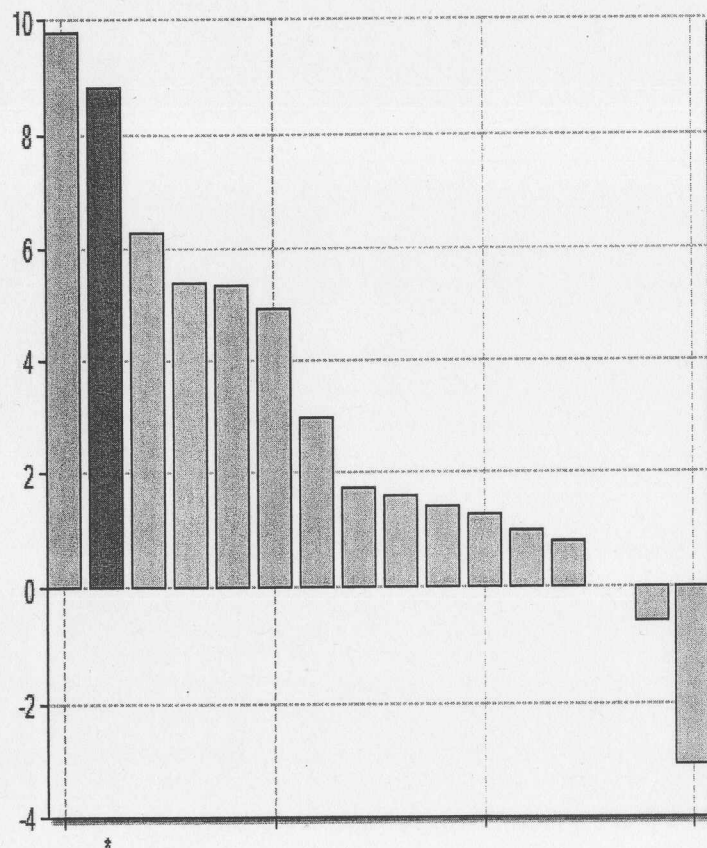
Net Revenue Expenditure £'s/head



Authority name	2004 £/head
Harrogate Borough Council	143.98
Chester City Council	134.34
Stroud District Council	128.68
Maidstone Borough Council	120.14
South Somerset District Council	117.42
West Wiltshire District Council	114.85
Shrewsbury and Atcham Borough Council	114.82
Mendip District Council	113.64
Ashford Borough Council	113.31
Warwick District Council	113.04
Stratford on Avon District Council	112.85
Mid Sussex District Council	109.72
Borough of Macclesfield	106.45
Taunton Deane Borough Council	104.76
Wychavon District Council	104.35
Salisbury District Council	103.63

Unapportionable central overheads

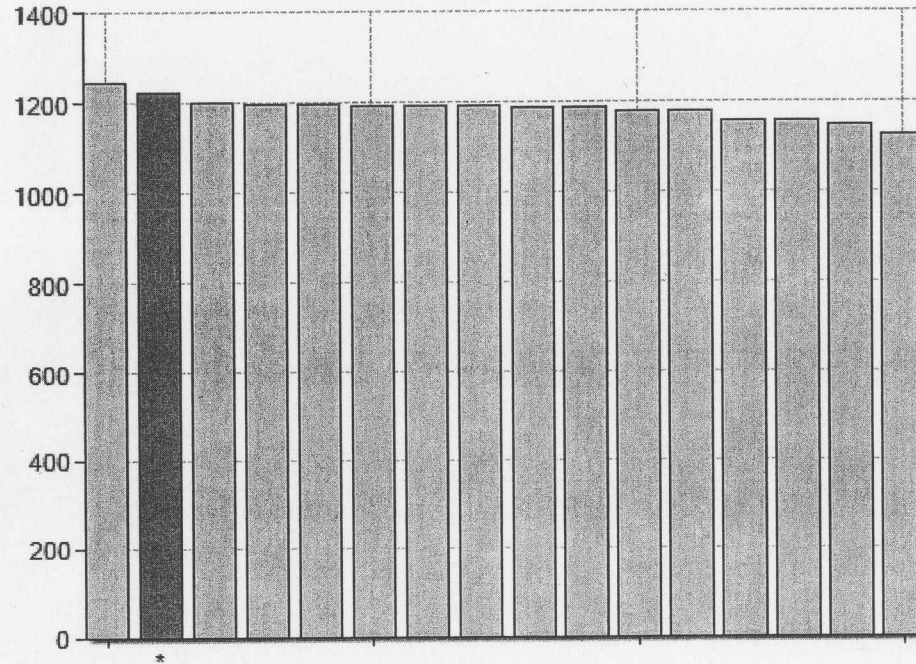
Unapportionable Central Overheads £'s/head



Authority name	2004 £/head
Ashford Borough Council	9.80
Harrogate Borough Council	8.81
Maidstone Borough Council	6.25
Mid Sussex District Council	5.40
Wychavon District Council	5.32
Borough of Macclesfield	4.93
Salisbury District Council	3
Shrewsbury and Atcham Borough Council	1.71
Warwick District Council	1.57
Mendip District Council	1.39
South Somerset District Council	1.29
Taunton Deane Borough Council	1.01
Stratford on Avon District Council	0.81
Chester City Council	0
West Wiltshire District Council	-0.60
Stroud District Council	-3.08

Council Tax

Average Band D Equivalent Council Tax £

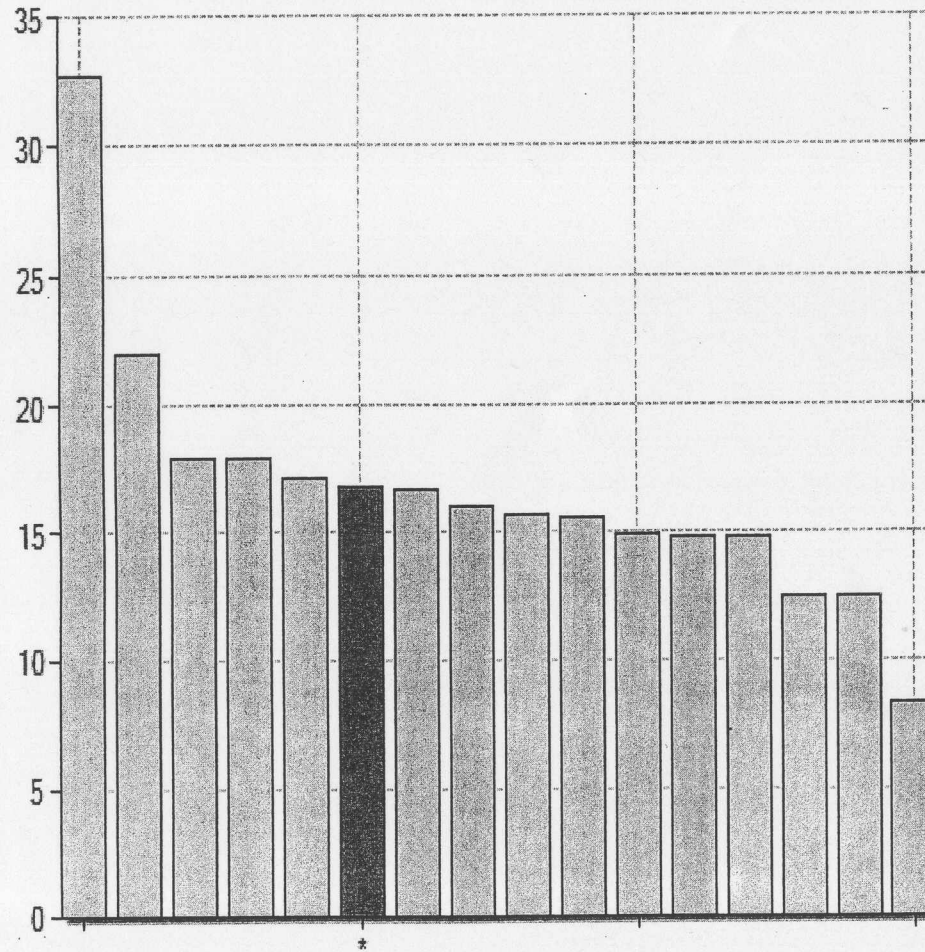


Authority name	2004 £/head
Stroud District Council	1247
Harrogate Borough Council	1224 Above average
South Somerset District Council	1200
Maidstone Borough Council	1198
Chester City Council	1198
West Wiltshire District Council	1194
Shrewsbury and Atcham Borough Council	1192
Mendip District Council	1192
Stratford on Avon District Council	1190
Borough of Macclesfield	1189
Warwick District Council	1178
Mid Sussex District Council	1177
Taunton Deane Borough Council	1158
Salisbury District Council	1155
Wychavon District Council	1146
Ashford Borough Council	1126

Group average Band d Council Tax is £1185

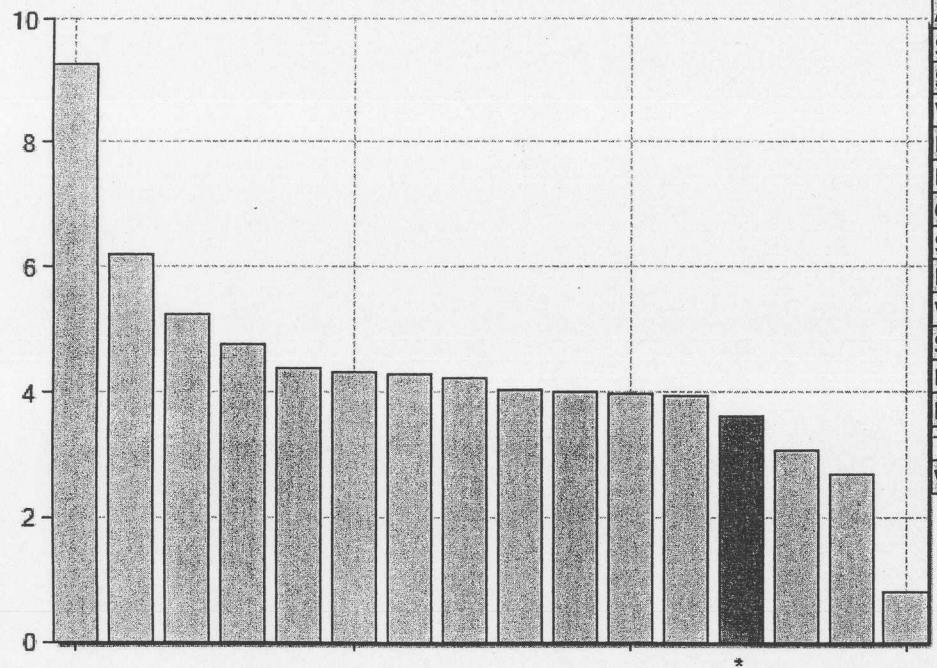
Central services and democratic core

Central Services Corporate And Democratic Core £'s/head



Authority name	2004 £/head
Chester City Council	32.72
Salisbury District Council	22.06
Ashford Borough Council	17.94
Stratford on Avon District Council	17.90
Wychavon District Council	17.16
Harrogate Borough Council	16.77 (includes pension anomaly)
Shrewsbury and Atcham Borough Council	16.67
Mid Sussex District Council	15.96
Warwick District Council	15.64
Borough of Macclesfield	15.59
Stroud District Council	14.86
West Wiltshire District Council	14.77
Maidstone Borough Council	14.73
Taunton Deane Borough Council	12.47
South Somerset District Council	12.39
Mendip District Council	8.35

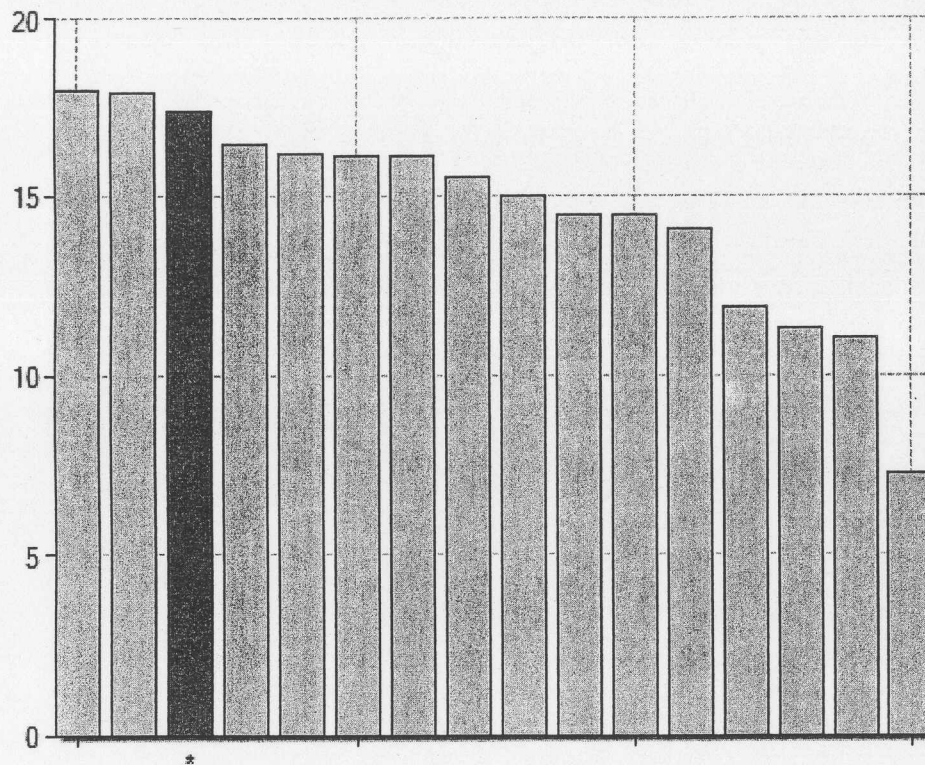
Council Tax Benefit Administration Costs £'s/head



Authority name	2004 £/h
South Somerset District Council	9.27
Ashford Borough Council	6.19
Stroud District Council	5.24
Salisbury District Council	4.78
Wychavon District Council	4.37
Mendip District Council	4.31
Borough of Macclesfield	4.28
Chester City Council	4.21
Stratford on Avon District Council	4.02
Mid Sussex District Council	4.01
Warwick District Council	3.96
Shrewsbury and Atcham Borough Council	3.94
Harrogate Borough Council	3.63
Maidstone Borough Council	3.09
Taunton Deane Borough Council	2.69
West Wiltshire District Council	0.83

Group average = £4.30/head

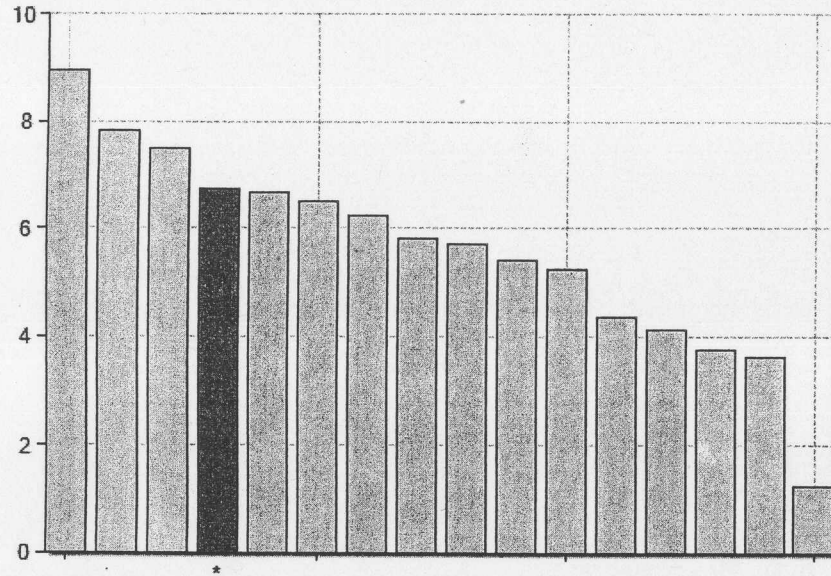
Local tax collection and benefits Total £'s /head



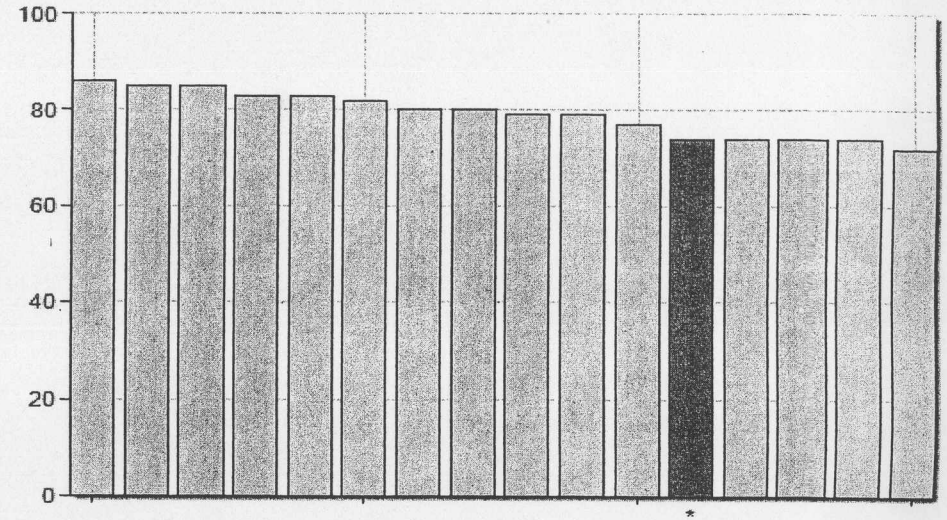
Authority name	2004	£/h
South Somerset District Council	18	
Stratford on Avon District Council	17.92	
Harrogate Borough Council	17.36	Above average
Mid-Sussex District Council	16.43	
Taunton Deane Borough Council	16.16	
Chester City Council	16.15	
Ashford Borough Council	16.09	
Shrewsbury and Atcham Borough Council	15.56	
Maidstone Borough Council	14.98	
Stroud District Council	14.49	
Wychavon District Council	14.46	
Borough of Macclesfield	14.08	
Salisbury District Council	11.91	
Warwick District Council	11.32	
Mendip District Council	11.04	
West Wiltshire District Council	7.27	

Group average = £14.58/head

Housing Benefit Administration Costs £'s /head



BV80g Satisfaction with housing benefit services overall %



Authority name	2004 £/h
Taunton Deane Borough Council	8.94
Salisbury District Council	7.84
Mendip District Council	7.51
Harrogate Borough Council	6.73 Above average of £5.61/head
Chester City Council	6.67
Mid Sussex District Council	6.51
Stratford on Avon District Council	6.25
Shrewsbury and Atcham Borough Council	5.80
Ashford Borough Council	5.73
Stroud District Council	5.42
Maidstone Borough Council	5.25
Wychavon District Council	4.37
South Somerset District Council	4.11
Borough of Macclesfield	3.75
Warwick District Council	3.63
West Wiltshire District Council	1.26

Authority name	% satisfaction 2004
Warwick District Council	86
Shrewsbury and Atcham Borough Council	85
Salisbury District Council	85
Taunton Deane Borough Council	83
Wychavon District Council	83
Stratford on Avon District Council	82
Stroud District Council	80
Borough of Macclesfield	80
West Wiltshire District Council	79
Mendip District Council	79
Chester City Council	77
Harrogate Borough Council	74 Below average of 79.19%
Ashford Borough Council	74
South Somerset District Council	74
Maidstone Borough Council	74
Mid Sussex District Council	72

Housing benefits

BV78a Speed of processing new claims on time	
Authority name	2004 %
Stratford on Avon District Council	54.80
South Somerset District Council	53
Stroud District Council	52.10
Mid Sussex District Council	50
Ashford Borough Council	49
Harrogate Borough Council	48 Above average of 39.16%
West Wiltshire District Council	47
Chester City Council	39.10
Borough of Macclesfield	34.50
Warwick District Council	32
Salisbury District Council	30
Wychavon District Council	29
Maidstone Borough Council	29
Taunton Deane Borough Council	28.70
Mendip District Council	25.70
Shrewsbury and Atcham Borough Council	24.70

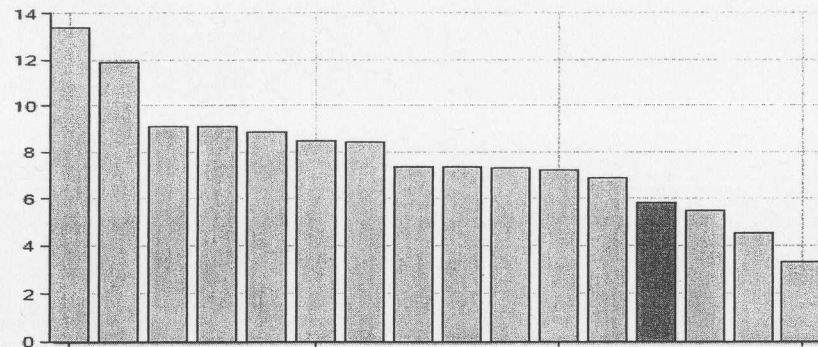
BV78b Speed of processing changes to HB/CTB on time (% processed)	
Authority name	2004
Mid Sussex District Council	25
Stratford on Avon District Council	16.20
West Wiltshire District Council	13
Ashford Borough Council	13
Harrogate Borough Council	11.80 Above av. of 10.06%
Maidstone Borough Council	11
Taunton Deane Borough Council	10.20
Stroud District Council	9.20
Warwick District Council	8
Salisbury District Council	8
Chester City Council	7.90
South Somerset District Council	7.50
Mendip District Council	5.70
Borough of Macclesfield	5.10
Wychavon District Council	5
Shrewsbury and Atcham Borough Council	4.40

BV78c Renewal claims to HB/CTB on time		
Authority name	%	2004
Stratford on Avon District Council	97.35	
Wychavon District Council	90.20	
Shrewsbury and Atcham Borough Council	87.15	
Warwick District Council	82	
Taunton Deane Borough Council	81.08	
Mendip District Council	79.50	
Stroud District Council	79.34	
Chester City Council	70.28	
Borough of Macclesfield	68.70	
Harrogate Borough Council	64.07	Above average of 60.45%
Salisbury District Council	57.83	
South Somerset District Council	51	
West Wiltshire District Council	48	
Ashford Borough Council	48	
Maidstone Borough Council	43.39	
Mid Sussex District Council	16.65	

BV79a Accuracy of HB/CTB claims (%)	
Authority name	2004
Wychavon District Council	100
Salisbury District Council	100
West Wiltshire District Council	99.20
Mid Sussex District Council	99
Harrogate Borough Council	98.90 Above av. of 98.19%
Shrewsbury and Atcham Borough Council	98.80
Taunton Deane Borough Council	98.40
South Somerset District Council	98.40
Chester City Council	98.40
Warwick District Council	98
Borough of Macclesfield	98
Stratford on Avon District Council	97.60
Mendip District Council	97.60
Maidstone Borough Council	97.48
Ashford Borough Council	96.80
Stroud District Council	94.39

Housing

Total Housing Services £'s /head



Authority name	2004 £/h
Mendip District Council	13.40
West Wiltshire District Council	11.88
South Somerset District Council	9.11
Taunton Deane Borough Council	9.10
Chester City Council	8.84
Stratford on Avon District Council	8.48
Wychavon District Council	8.42
Mid Sussex District Council	7.38
Warwick District Council	7.35
Salisbury District Council	7.30
Stroud District Council	7.21
Maidstone Borough Council	6.89
Harrogate Borough Council	5.82 Below £7.78/h av.
Shrewsbury and Atcham Borough Council	5.49
Ashford Borough Council	4.50
Borough of Macclesfield	3.31

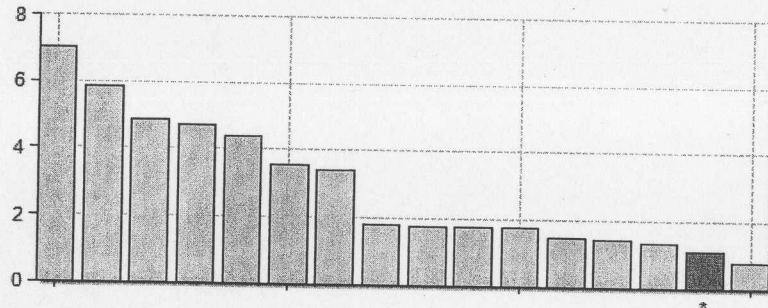
BV 74a Tenant satisfaction with landlord	
Authority name	% 2004
Harrogate Borough Council	91 Above 84.29% av.
Taunton Deane Borough Council	88
Warwick District Council	85
Stroud District Council	84
Borough of Macclesfield	83
Ashford Borough Council	81
Salisbury District Council	78

BV184a Proportion of LA homes which were non-decent	
Authority name	2004 %
Maidstone Borough Council	53
Warwick District Council	42
Harrogate Borough Council	36 Below 25.88% av.
Stroud District Council	25
Borough of Macclesfield	22
Taunton Deane Borough Council	14
Salisbury District Council	11
Ashford Borough Council	4

BV62 Unfit private sector dwellings made fit/demolished %	
Authority name	2004 %
Taunton Deane Borough Council	9.64
Chester City Council	7.43
Harrogate Borough Council	4.85 Above 3.94% av.
Mid Sussex District Council	4.40
Maidstone Borough Council	4.17
South Somerset District Council	4.10
Stroud District Council	4.04
Borough of Macclesfield	3.28
Warwick District Council	3.20
West Wiltshire District Council	2.10
Mendip District Council	1.90
Wychavon District Council	1.60
Shrewsbury and Atcham Borough Council	0.46
Stratford on Avon District Council	0
Salisbury District Council	0

Homelessness

Homelessness £'s /head



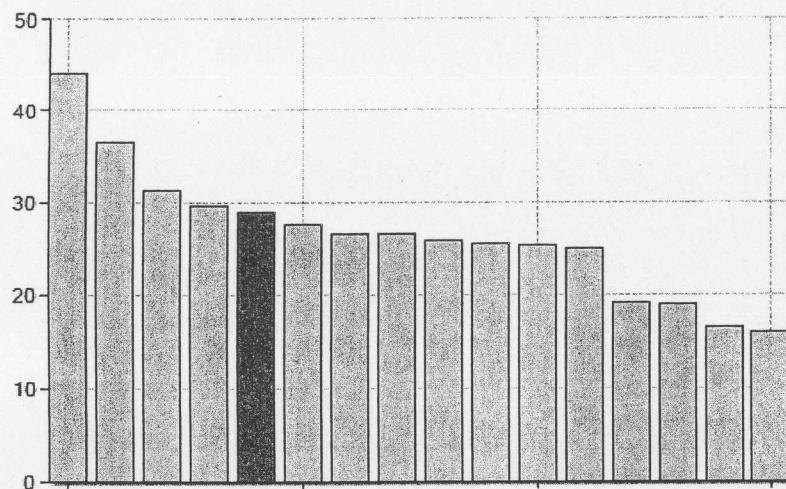
Authority name	2004 £/head
West Wiltshire District Council	7
Mendip District Council	5.85
Salisbury District Council	4.86
South Somerset District Council	4.71
Taunton Deane Borough Council	4.40
Mid Sussex District Council	3.53
Stratford on Avon District Council	3.41
Shrewsbury and Atcham Borough Council	1.84
Ashford Borough Council	1.79
Warwick District Council	1.75
Maidstone Borough Council	1.75
Wychavon District Council	1.48
Chester City Council	1.46
Stroud District Council	1.35
Harrogate Borough Council	1.12 Below £2.94/h av.
Borough of Macclesfield	0.80

BV 183b Average length of stay in hostel accommodation (weeks)	
Authority name	2004
West Wiltshire District Council	29.76
Mid Sussex District Council	29.36
Harrogate Borough Council	24 Group av. = 19.27 wks
Mendip District Council	18
Shrewsbury and Atcham Borough Council	16.80
South Somerset District Council	13
Borough of Macclesfield	4
Stratford on Avon District Council	0
Ashford Borough Council	0
Chester City Council	0
Warwick District Council	0
Maidstone Borough Council	0
Salisbury District Council	0
Wychavon District Council	0
Stroud District Council	0
Taunton Deane Borough Council	0

BV 183a Average length of stay in B&B accommodation (weeks)	
Authority name	2004
Salisbury District Council	16.87
West Wiltshire District Council	12.68
Wychavon District Council	11
South Somerset District Council	10
Stratford on Avon District Council	7.71
Mid Sussex District Council	7.36
Mendip District Council	7
Taunton Deane Borough Council	5.71
Ashford Borough Council	4.43
Stroud District Council	4
Chester City Council	3
Harrogate Borough Council	2 Group av. = 5.90 wks
Maidstone Borough Council	1.99
Shrewsbury and Atcham Borough Council	0.60
Warwick District Council	0
Borough of Macclesfield	0

Culture/heritage

Culture Total £'s/head



Authority name	2004 £/head
Shrewsbury and Atcham Borough Council	44.06
Chester City Council	36.42
Warwick District Council	31.23
Maidstone Borough Council	29.65
Harrogate Borough Council	28.97 Above £26.41/h av.
Taunton Deane Borough Council	27.44
Mid Sussex District Council	26.56
Ashford Borough Council	26.55
Salisbury District Council	25.78
West Wiltshire District Council	25.50
Borough of Macclesfield	25.25
South Somerset District Council	24.92
Wychavon District Council	19
Stroud District Council	18.83
Stratford on Avon District Council	16.50
Mendip District Council	15.93

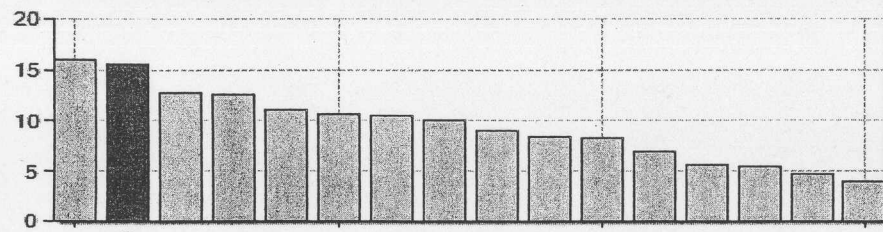
BV 119c Satisfaction with museums and galleries

Authority name	2004 %
Warwick District Council	60
Maidstone Borough Council	56
Chester City Council	52
Salisbury District Council	50
Harrogate Borough Council	50 Above 45.45% av.
Shrewsbury and Atcham Borough Council	47
Stroud District Council	41
South Somerset District Council	40
Stratford on Avon District Council	39
Borough of Macclesfield	39
Ashford Borough Council	26

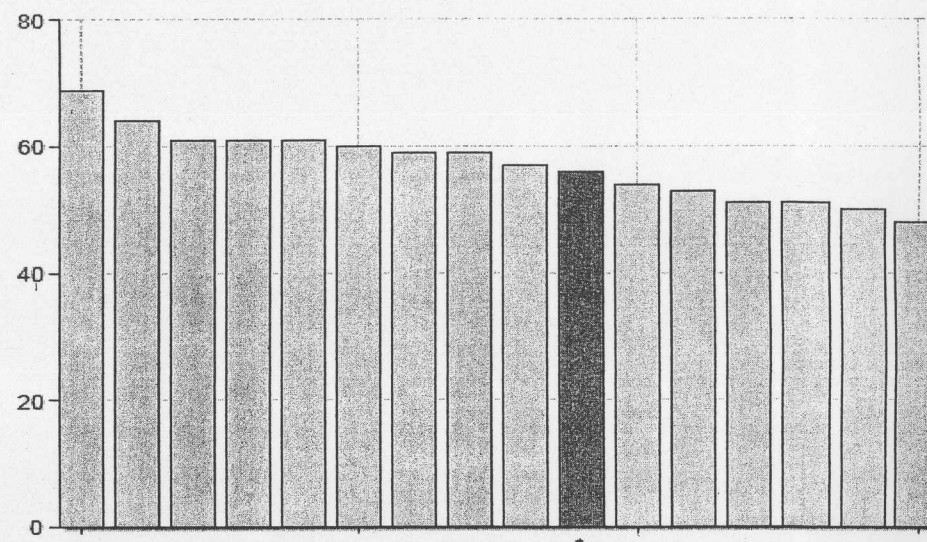
BV 119d Satisfaction with museums and concert halls

Authority name	2004 %
Salisbury District Council	64
Harrogate Borough Council	58 Above 50.27% av.
Warwick District Council	57
Maidstone Borough Council	54
South Somerset District Council	53
Mid Sussex District Council	52
Taunton Deane Borough Council	51
Shrewsbury and Atcham Borough Council	48
Chester City Council	44
West Wiltshire District Council	39
Stroud District Council	33

Sport & Recreation £'s /head



BV119a Satisfaction with sport/leisure facilities %



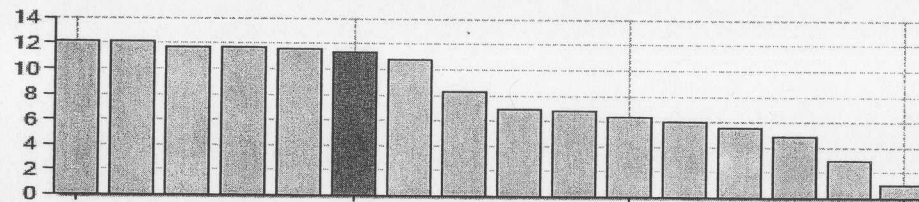
BV119a Satisfaction with sport/leisure facilities

Authority name	2004 £/head
Mid Sussex District Council	15.96
Harrogate Borough Council	15.48 Above £9.77/h av.
West Wiltshire District Council	12.73
Shrewsbury and Atcham Borough Council	12.57
Borough of Macclesfield	11.10
Taunton Deane Borough Council	10.60
South Somerset District Council	10.52
Warwick District Council	10
Mendip District Council	9
Ashford Borough Council	8.37
Wychavon District Council	8.21
Salisbury District Council	6.94
Stroud District Council	5.57
Chester City Council	5.42
Stratford on Avon District Council	4.78
Maidstone Borough Council	4.01

Authority name	2004 %
Mid Sussex District Council	69
Wychavon District Council	64
Taunton Deane Borough Council	61
Warwick District Council	61
Borough of Macclesfield	61
West Wiltshire District Council	60
Maidstone Borough Council	59
Mendip District Council	59
South Somerset District Council	57
Harrogate Borough Council	56 Below 57.13% av.
Chester City Council	54
Stratford on Avon District Council	53
Shrewsbury and Atcham Borough Council	51
Stroud District Council	51
Salisbury District Council	50
Ashford Borough Council	48

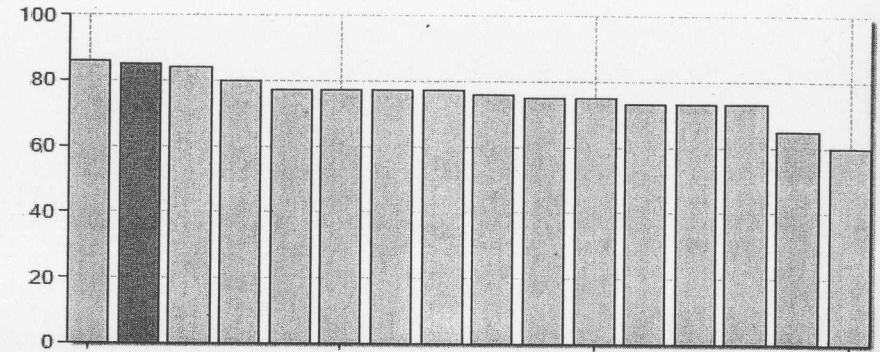
Parks

Parks & Open Spaces £'s/head



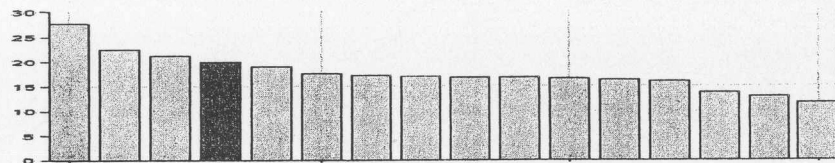
Authority name	2004 £/head
Chester City Council	12.13
Warwick District Council	12.12
Shrewsbury and Atcham Borough Council	11.68
Maidstone Borough Council	11.66
Borough of Macclesfield	11.58
Harrogate Borough Council	11.39 Above £8.13 av.
Taunton Deane Borough Council	10.82
Ashford Borough Council	8.30
Stratford on Avon District Council	6.90
West Wiltshire District Council	6.83
South Somerset District Council	6.32
Salisbury District Council	5.98
Wychavon District Council	5.56
Mid Sussex District Council	4.88
Stroud District Council	2.98
Mendip District Council	1.01

BV119e Satisfaction with parks and open spaces %



BV119c Satisfaction with Parks and Open Space services

Authority name	2004 %
Warwick District Council	86
Harrogate Borough Council	85 Above 75.81% av.
Taunton Deane Borough Council	84
Mid Sussex District Council	80
West Wiltshire District Council	77
Wychavon District Council	77
Borough of Macclesfield	77
Maidstone Borough Council	77
Stratford on Avon District Council	76
Shrewsbury and Atcham Borough Council	75
Chester City Council	75
Stroud District Council	73
South Somerset District Council	73
Salisbury District Council	73
Mendip District Council	65
Ashford Borough Council	60



Authority name	£/h 2004
Stratford on Avon District Council	27.66
Shrewsbury and Atcham Borough Council	22.52
Borough of Macclesfield	21.24
Harrogate Borough Council	19.94 Above £17.64/h av.
Chester City Council	18.98
Wychavon District Council	17.59
Mendip District Council	17.19
Stroud District Council	16.89
Salisbury District Council	16.74
Mid Sussex District Council	16.67
Warwick District Council	16.47
Ashford Borough Council	16.19
Maidstone Borough Council	15.93
South Somerset District Council	13.74
Taunton Deane Borough Council	12.89
West Wiltshire District Council	11.65

BV90a Satisfaction with waste collection

Authority name	2004 %
West Wiltshire District Council	93
Mendip District Council	93
South Somerset District Council	93
Taunton Deane Borough Council	92
Salisbury District Council	91
Shrewsbury and Atcham Borough Council	90
Stratford on Avon District Council	90
Wychavon District Council	90
Harrogate Borough Council	89 Below 89.06% av.
Ashford Borough Council	88
Stroud District Council	87
Warwick District Council	87
Maidstone Borough Council	87
Mid Sussex District Council	86
Chester City Council	86
Borough of Macclesfield	83

BV90b Satisfaction with recycling facilities

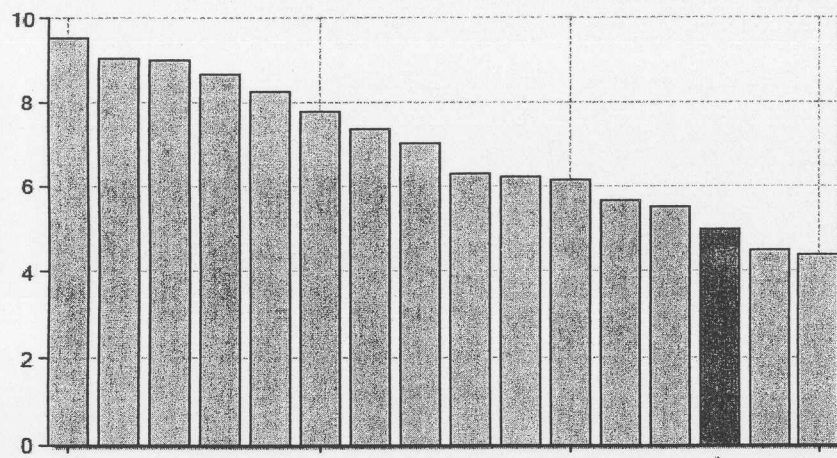
Authority name	2004 %
Mendip District Council	82
Stroud District Council	80
Wychavon District Council	80
West Wiltshire District Council	79
South Somerset District Council	78
Taunton Deane Borough Council	74
Mid Sussex District Council	74
Warwick District Council	73
Shrewsbury and Atcham Borough Council	72
Chester City Council	71
Ashford Borough Council	69
Stratford on Avon District Council	68
Borough of Macclesfield	65
Maidstone Borough Council	64
Salisbury District Council	61
Harrogate Borough Council	59 Below 71.81% av.

BV82a and BV82b Household waste recycled and composted

Authority name	2004 %
Chester City Council	26.51
Warwick District Council	23.25
Stroud District Council	20.82
Mid Sussex District Council	19.86
Shrewsbury and Atcham Borough Council	18.80
Stratford on Avon District Council	18.18
Taunton Deane Borough Council	17.66
Salisbury District Council	17.40
Wychavon District Council	17.20
Maidstone Borough Council	15.90
South Somerset District Council	15.20
Harrogate Borough Council	15.00 Below 17.36% av.
Ashford Borough Council	14.08
Mendip District Council	14
Borough of Macclesfield	13.64
West Wiltshire District Council	10.23

Environment

Street Cleaning & Litter Responsibilities £'s /head



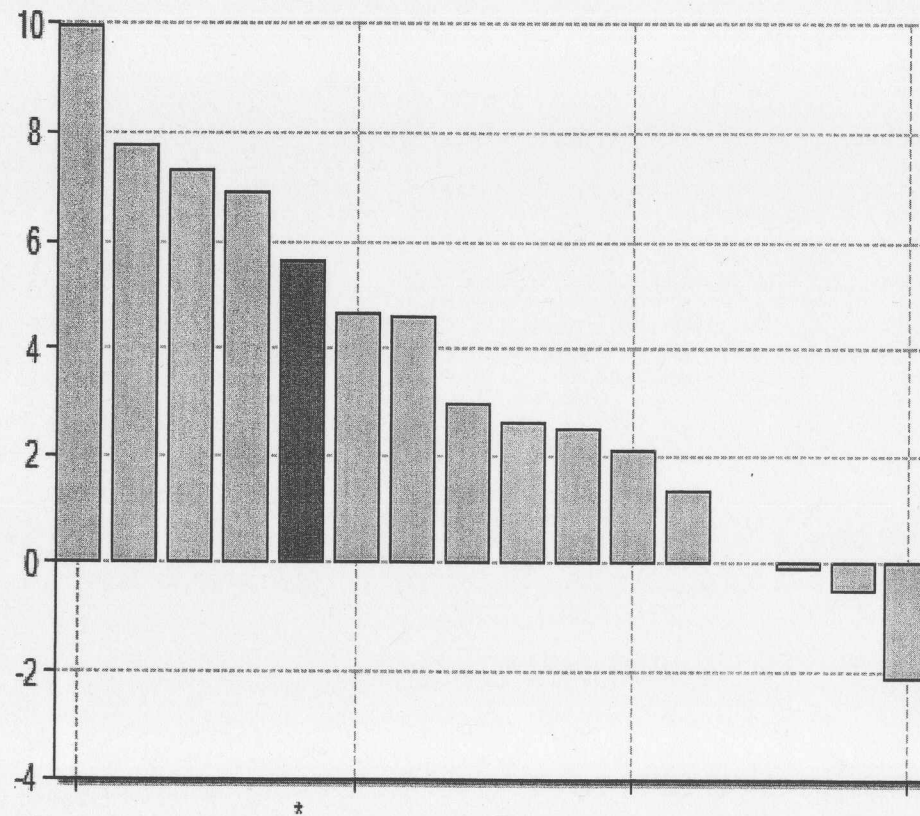
Authority name	2004 £/head
Chester City Council	9.51
Borough of Macclesfield	9.02
Wychavon District Council	9.01
Shrewsbury and Atcham Borough Council	8.67
Maidstone Borough Council	8.24
Ashford Borough Council	7.75
South Somerset District Council	7.33
Salisbury District Council	7.02
Warwick District Council	6.31
Mid Sussex District Council	6.22
Stratford on Avon District Council	6.16
West Wiltshire District Council	5.64
Taunton Deane Borough Council	5.52
Harrogate Borough Council	4.99 Below £6.89/h av.
Stroud District Council	4.50
Mendip District Council	4.40

BV 89 Satisfaction with standard of cleanliness	
Authority name	2004 %
Harrogate Borough Council	74 Above 66.06% av.
Stratford on Avon District Council	73
Salisbury District Council	73
Taunton Deane Borough Council	72
South Somerset District Council	72
Wychavon District Council	69
Mid Sussex District Council	69
Stroud District Council	67
West Wiltshire District Council	64
Chester City Council	64
Shrewsbury and Atcham Borough Council	62
Borough of Macclesfield	62
Warwick District Council	62
Maidstone Borough Council	59
Mendip District Council	58
Ashford Borough Council	57

BV 199 Local street and Environmental cleanliness - % not meeting the cleanliness standard	
Authority name	2004 %
Ashford Borough Council	38.90
South Somerset District Council	33
Warwick District Council	28
Salisbury District Council	28
Shrewsbury and Atcham Borough Council	27.30
Taunton Deane Borough Council	27.20
Chester City Council	26
Maidstone Borough Council	18
Mid Sussex District Council	16
Mendip District Council	15.60
Borough of Macclesfield	15
Wychavon District Council	14
Stroud District Council	12
Harrogate Borough Council	11 Not clean av. = 19.63%
Stratford on Avon District Council	4

Economic and community development

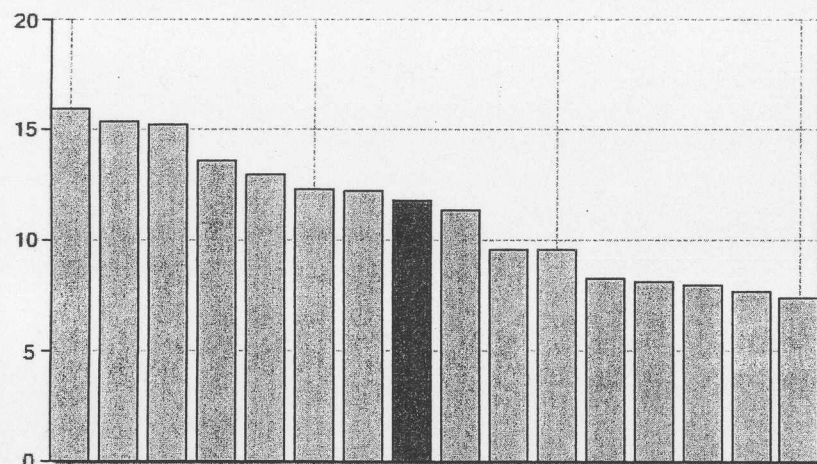
Economic & Community Development £'s/head



Authority name	2004 £/head
South Somerset District Council	9.96
Taunton Deane Borough Council	7.79
Chester City Council	7.31
Mendip District Council	6.88
Harrogate Borough Council	5.60 Above £3.47/h av.
Warwick District Council	4.62
Stroud District Council	4.59
Maidstone Borough Council	2.97
Stratford on Avon District Council	2.61
Wychavon District Council	2.49
West Wiltshire District Council	2.11
Salisbury District Council	1.36
Borough of Macclesfield	0
Shrewsbury and Atcham Borough Council	-0.11
Ashford Borough Council	-0.49
Mid Sussex District Council	-2.10

Planning

Planning Total £'s/head

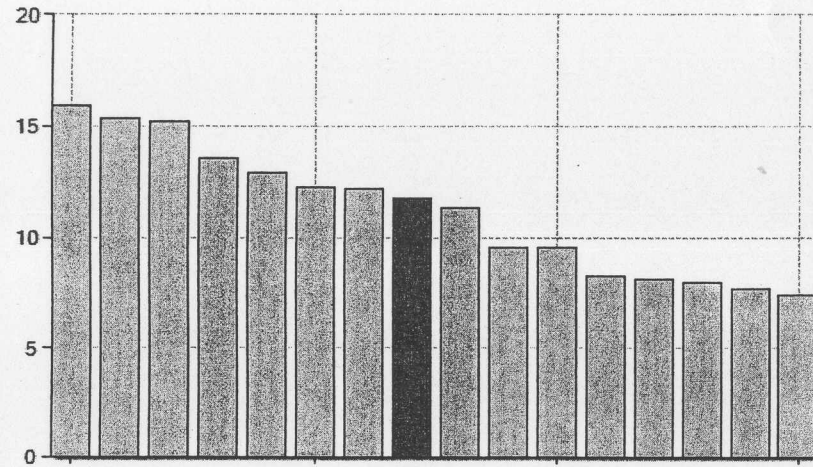


BV 109b Percentage of minor planning Applications determined within 8 weeks	
Authority name	% 2004
Shrewsbury and Atcham Borough Council	84.30
Taunton Deane Borough Council	77.96
Wychavon District Council	77
Ashford Borough Council	71.48
Warwick District Council	64
Mid Sussex District Council	64
Borough of Macclesfield	63.13
Stratford on Avon District Council	62.60
Chester City Council	61.56
Harrogate Borough Council	58.60 Below 59.86% av.
West Wiltshire District Council	54
Mendip District Council	48.70
Maidstone Borough Council	47
South Somerset District Council	46.20
Salisbury District Council	44.17
Stroud District Council	33.06

BV 109a Percentage of major planning Applications determined within 13 weeks	
Authority name	2004 %
Taunton Deane Borough Council	86.67
Borough of Macclesfield	64.18
Salisbury District Council	57.40
Mendip District Council	55.90
West Wiltshire District Council	53
Stratford on Avon District Council	52.50
Shrewsbury and Atcham Borough Council	51.20
Chester City Council	49.18
Wychavon District Council	48.40
Maidstone Borough Council	48
Warwick District Council	46
South Somerset District Council	44
Ashford Borough Council	41.17
Harrogate Borough Council	38 Below 49.35% av.
Mid Sussex District Council	38
Stroud District Council	16

BV 109c Percentage of other planning Applications determined within 8 weeks	
Authority name	2004 %
Shrewsbury and Atcham Borough Council	91
Wychavon District Council	87.10
Taunton Deane Borough Council	86.92
Mid Sussex District Council	85
Ashford Borough Council	83.87
Harrogate Borough Council	81.30 Above 77.92% av.
Warwick District Council	81
Mendip District Council	79.40
Stratford on Avon District Council	79.30
Chester City Council	77.42
Borough of Macclesfield	76.57
West Wiltshire District Council	76
Maidstone Borough Council	74
Salisbury District Council	70.58
South Somerset District Council	68
Stroud District Council	49

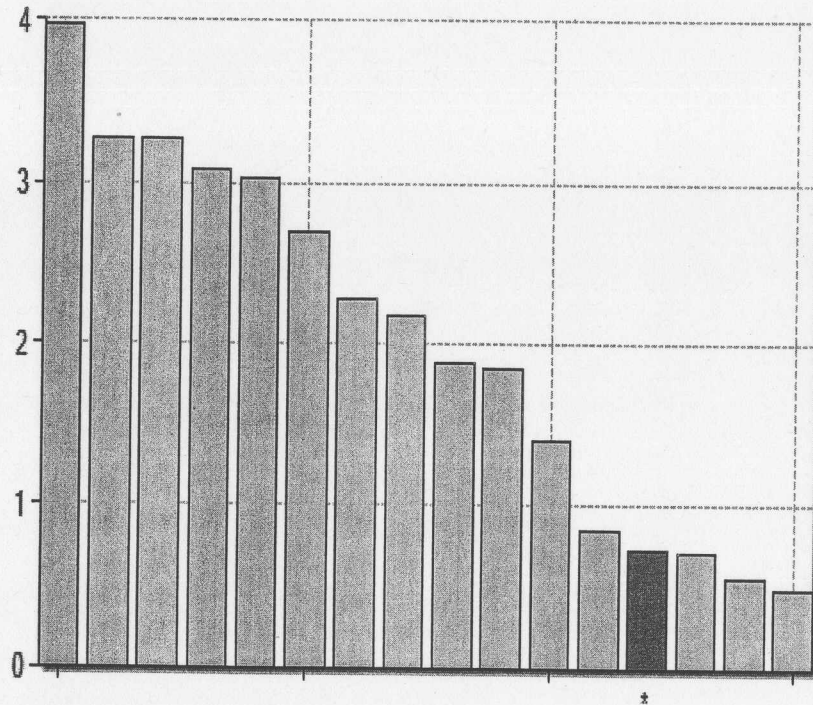
Planning Total £'s /head



Authority name	2004 £/head
Stratford on Avon District Council	15.94
Salisbury District Council	15.32
Chester City Council	15.18
South Somerset District Council	13.57
Ashford Borough Council	12.91
Maidstone Borough Council	12.24
Wychavon District Council	12.17
Harrogate Borough Council	11.73 Above £11.20 av.
Mid Sussex District Council	11.30
Stroud District Council	9.56
Shrewsbury and Atcham Borough Council	9.53
Mendip District Council	8.24
Taunton Deane Borough Council	8.07
West Wiltshire District Council	7.98
Warwick District Council	7.68
Borough of Macclesfield	7.39

Community safety

Community Safety £'s/head

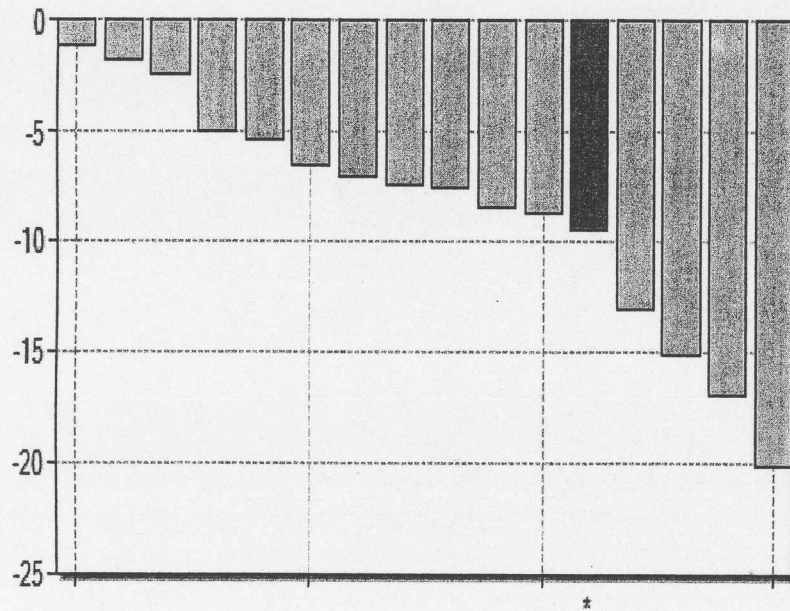


Authority name	2004 £/head
Warwick District Council	3.96
Stroud District Council	3.27
Salisbury District Council	3.27
Chester City Council	3.08
Maidstone Borough Council	3.04
Borough of Macclesfield	2.71
Mid Sussex District Council	2.28
Shrewsbury and Atcham Borough Council	2.19
Wychavon District Council	1.88
Stratford on Avon District Council	1.85
Ashford Borough Council	1.41
Mendip District Council	0.85
Harrogate Borough Council	0.73 Below £2.40/h av.
South Somerset District Council	0.70
West Wiltshire District Council	0.56
Taunton Deane Borough Council	0.48

NB the PIs are those that were available on the Audit Commission website on 28/7/05

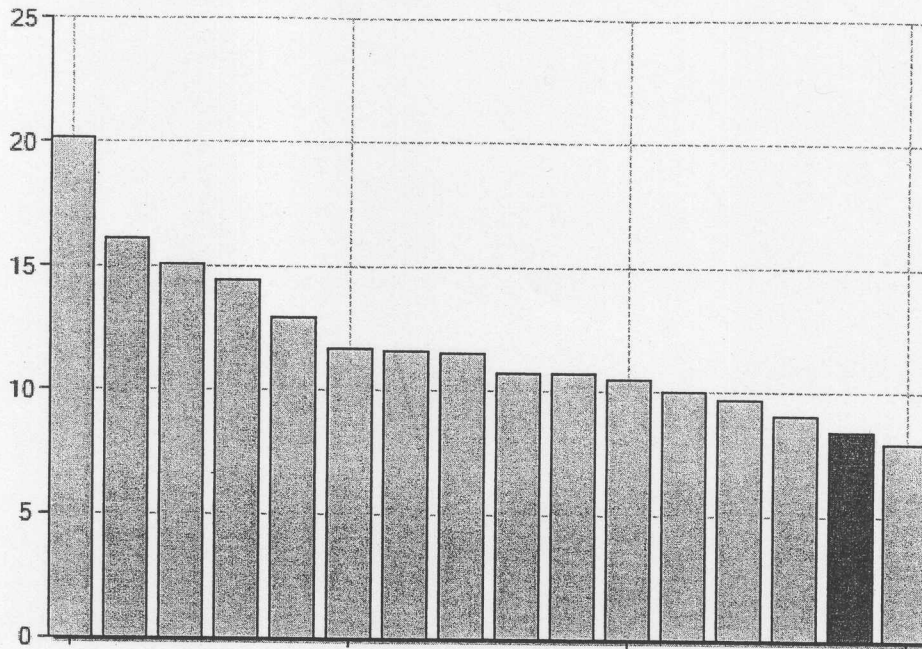
Parking £'s/head

Parking



Authority name	2004
Stroud District Council	-1.16
West Wiltshire District Council	-1.83
Maidstone Borough Council	-2.49
Ashford Borough Council	-5.05
South Somerset District Council	-5.33
Wychavon District Council	-6.53
Warwick District Council	-6.99
Mendip District Council	-7.46
Mid Sussex District Council	-7.50
Borough of Macclesfield	-8.42
Stratford on Avon District Council	-8.73
Harrogate Borough Council	-9.53
Shrewsbury and Atcham Borough Council	-13.06
Taunton Deane Borough Council	-15.10
Salisbury District Council	-16.89
Chester City Council	-20.18

Environmental & Public Health Services £'s /head



name	2004 £/head
Mendip District Council	20.21
Taunton Deane Borough Council	16.16
Stratford on Avon District Council	15.10
South Somerset District Council	14.43
Chester City Council	12.92
Wychavon District Council	11.71
Warwick District Council	11.62
Shrewsbury and Atcham Borough Council	11.50
Maidstone Borough Council	10.69
Ashford Borough Council	10.69
Borough of Macclesfield	10.51
Stroud District Council	10.01
Salisbury District Council	9.68
West Wiltshire District Council	9.05
Harrogate Borough Council	8.39 Below £11.91/h av.
Mid Sussex District Council	7.95

HARROGATE BOROUGH COUNCIL

VALUE FOR MONEY KLOE 5.1: COMPARATIVE COSTS AND PERFORMANCE
ON CORE SERVICES IN THE CIPFA FAMILY GROUP

<p style="text-align: center;">Above average performance; Below average cost/head</p> <p style="text-align: right;"><u>Performance</u> ↑</p> <p>* Street Cleansing & Litter * Housing Services</p> <p>* Environmental & Public Health</p> <p>Community Safety ✕</p> <p style="text-align: center;">◆ Central and democratic core (pension adjustment)</p>	<p style="text-align: center;">Above average performance; Above average cost/head</p> <p style="text-align: right;"><u>Cost/head</u> →</p> <p style="text-align: center;">* Parks & Open Space</p> <p style="text-align: center;">* Cultural Services</p> <p style="text-align: center;">■ Economic Development</p> <p style="text-align: center;">* Council Overall</p>
<p style="text-align: center;">Below average performance; Below average cost/head</p> <p>✚ Homelessness (Hostels)</p> <p>Council Tax * Benefit admin.</p>	<p style="text-align: center;">Below average performance; Above average cost/head</p> <p>* Waste Collection</p> <p style="text-align: center;">* Housing Benefit Admin</p> <p>Planning *</p> <p style="text-align: right;">* Sport & Recreation</p>
<p>PERFORMANCE MEASURES: * = customer satisfaction; ✚ = average length of stay in hostels; ✕ = level of crime reduction; ◆ = annual management letter; ■ = LABGI performance grant</p>	

Value For Money Self-Assessment

The Council's Annual Efficiency Statement

The main efficiency gains for 2004/05 were:-

	£
Environmental Services -	14,720*
Council restructure -	120,790*
Member Services/Legal -	4,720*
	29,370
IS&T -	8,900
Procurement -	
Fly Tipping -	4,220*
Photocopiers -	3,000*
CCTV -	5,000*
Car Park Tickets -	3,000*
Air Quality -	5,000*
Council Tax leaflets -	6,000*
Transactions -	
Council Tax collection -	5,470
Council Tax collection -	12,230*
Benefits -	10,000*
Forward Planning -	15,000
Dev Control	40,300*
Building Control income	17,000*
-	
Inflation -	100,000*
Housekeeping -	52,180*
Treasury Management -	41,000*

In total, for 2004/05, the Authority's Annual Efficiency Statement (AES) identified £439,160 of cashable efficiency savings.

NB: * = cashable 2004/05 saving.